



JSDSOLAR

JSDSOLAR

☎ 0086-755-89918655

✉ sales@jsdsolar.com

🌐 www.jsdsolar.com

ENERGY STORAGE PRODUCT AND SOLUTION

Power Your Home With Intelligent Solar



JSDSOLAR

COMPANY PROFILE

JSDSOLAR has provided solar system solutions for **100,000** households and enterprises around the world.

CONTENTS

01 Why JSDSOLAR was Born

Born for solar home system

02 Company Profile

Since 2005. A innovative enterprise focuses on the R&D and manufacturing of solar home system

03 Products and Solutions

provided solar system solutions for **100,000** households and enterprises around the world

04 Classic Cases

High-quality service provider for **100,000** households and businesses around the world

05 Our Advantages

Pioneer in the field of solar system

06 Our Future

Become the most competitive international solar system corporation

WHY JSDSOLAR WAS BORN



Born for solar home system!

“Power your home with smart solar energy”

Know our customers' needs:

- ▶ Reduce electricity bills
- ▶ Improve reliability and resilience
- ▶ Integrate generation sources
- ▶ Low Maintenance Costs
- ▶ Help reduce environmental impacts

CONTENT

Company Profile

Profile Photos - - - - -	06
Culture - - - - -	07
Honor - - - - -	08
Overseas Sales Team - - - - -	09
Product Creation Control - - - - -	10

Products and Solutions

Products

off-grid solar inverter J5500HP - - - - -	11-12
Single Phase hybrid Inverter J6KHP/J8KHP- - - - -	13-14
Single Phase hybrid inverter sun-3.6/5/8/12K - - - - -	15-16
Three Phase Hybrid Inverter Sun-6/8/10/12K - - - - -	17-18
Three Phase Hybrid inverter JMPS0030-150K- - - - -	19-20
Power wall lithium battery BG48100- - - - -	21-22
Standing Lithium battery LFP48200 - - - - -	23-24
Power Wall Lithium battery BG48200 - - - - -	25-26
4U lithium battery J4U48100 - - - - -	27-28
High voltage Lithium battery JHB60-400V / JHB90-600V - - - - -	29-30
ABS Case Lithium Battery J12100/J12200/J24100 - - - - -	31-32
MPPT solar heating Controller SWHC-4K- - - - -	33-34
EV charging station VTEDC1-60/120/160/180/240/320KW - - - - -	35-36

Solar Power Systems

Power Wall Solar Home System- - - - -	38
EU Hybrid Solar Home System - - - - -	39
EU Hybrid Solar Home System - - - - -	40
Commercial Grade Solar System - - - - -	41

Case Studies - - - - -	43
Business Network - - - - -	44

Our Advantages

R&D Strength - - - - -	46
Five Year Plan - - - - -	47
Sincere Cooperation - - - - -	48
Service Process - - - - -	49
After-Sales Service - - - - -	50

COMPANY PROFILE



JSDSolar was founded in 2005, covers an area of more than 6000 square meters, is one of the China's high-tech enterprises, a vibrant and fast-growing international company and as a leader in the solar energy industrial.

JSDSOLAR as a leading one-stop solar systems solution supplier, has enough experience on project design, quality control, technical guidance, installation instructions and after-sales services. It's focusing on providing solar home storage system, industrial and commercial energy storage systems, integrating the R&D, production and sales of solar inverters and lithium batteries.

JSDSOLAR is committed to becoming a leading brand of solar residential energy storage systems in the world, build a smart energy management systems, build a green efficient energy environment, and illuminate every family with smart energy storage.

PROFILE PHOTOS



- ✓ **12+**
Experience in solar system production and manufacturing
- ✓ **30+**
R&D team
- ✓ **Won**
National high-tech enterprise
- ✓ **50+**
Product patents

- ✓ **150,000+**
Annual output of inverters
- ✓ **5+**
Years The system operates stably and safely without fault
- ✓ **100,000+**
Application cases of solar home system
- ✓ **150+**
Countries for business

CULTURE



HONOR



Vision

Become the most competitive international solar system corporation



Mission

Power every home with smart solar energy



Business Philosophy

Be reliable, strong, big, good and long



Values

Honest and trustworthy, people-oriented, innovative development



- ✓ China's excellent solar system brand enterprise
- ✓ National high-tech enterprise
- ✓ Benevolent Enterprise
- ✓ Won the advanced design award of solar system products



PRODUCT CREATION CONTROL

- ▶ Strict material screening
- ▶ Precision machining equipment
- ▶ Quality inspection center
- ▶ Technology R&D team
- ▶ Final assembly inspection
- ▶ Strict production control

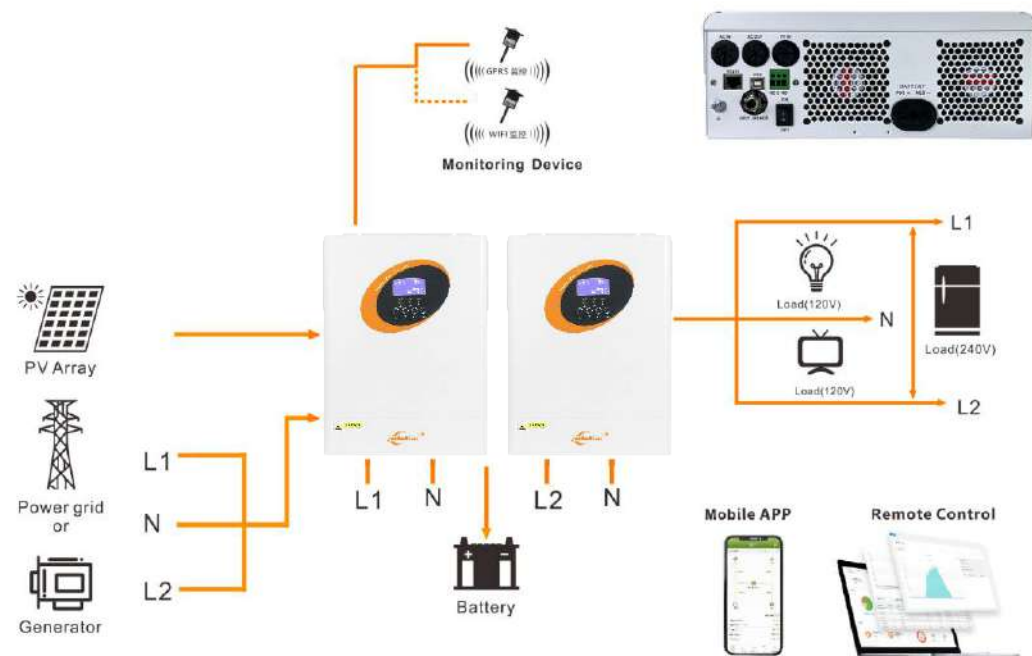
OVERSEAS SALES TEAM

Professional / Energetic / Attentive / Dreamy

We are a team with dreams. We come from all over the world because of a common dream: to be a truly excellent intelligent solar system enterprise and provide users with the most perfect solar system products and services.



OFF-GRID SOLAR INVERTER J5500HP



◇ Technical Parameters:

Model	J5500HP
Capacity	5.5KW
Parallel Capability	YES, 12units
Input	
Nominal Voltage	230VAC
Acceptable Voltage Range	170-280 VAC (For Personal Computers),90-280 VAC (For Home Appliances)
Frequency	50/60HZ (Auto sensing)
Output	
Nominal Voltage	220/230VAC±5%
Surge Power	10000VA
Frequency	50Hz/60Hz
Waveform	Pure Sine Wave
Transfer Time	10ms (For Personal Computers); 20ms (For Home Appliances) 97%
Peak Efficiency (PV to INV)	97%
Peak Efficiency (Battery to INV)	93%
overload Protection	5s@>=150% load; 10s 110%-150% load
Crest Factor	3:1
Admissible Power Factor	0.6-1 (inductive or capacitive)
Battery	
Battery Voltage	48 VDC
Floating Charge Voltage	54 VDC
Overcharge Protection	63 VDC
Charging Method	CC/CV
Solar Charge & AC Charge	
Solar Charge Type	MPPT
Max. PV Array Power	5500W
Max. PV Array Open Circuit Voltage	500 VDC
PV Array MPPT Voltage Range	120VDC~450 VDC
Maximum Solar Input Current	18A
Maximum Solar Charge Current	100A
Maximum AC Charge Current	60A
Maximum Charge Current	100A
Communication Interface	USB/RS232/Dry-contact
Environment	
Operating Temperature	(-10℃~50℃)
Storage Temperature	(-15℃~60℃)
Humidity	5% to 95% Relative Humidity (Non-condensing)

SINGLE PHASE HYBRID INVERTER J6KHP/J8KHP



◇ Product Features:

- Wide input voltage range
- Compatible with lead-acid or Lithium iron phosphate battery or other battery
- Fashion appearance, light weight, smart operation
- Natural cooling, low noise
- Wall mounted design, saving space
- Touch screen LCD
- Intelligent energy management system for home
- Distributed virtual power station management.

◇ Technical Parameters:

Model	J6KHP	J8KHP
PV Input		
Max. Input Power(KW)	7	12
Max. PV voltage(V)	550	550
MPPT range/nominal(V)	125V-550/360	125V-550/360
Max. input current(A)	14	14
Max. short circuit current (A)	17.5	20
AC Output		
Rated power KVA	6	8
Max. output current (A)	26	38.3
AC output Voltage (V)	220, 230, 240	220, 230, 240
Frequency(Hz)	50 /60	50 /60
PF	0.99lagging-0.99leading	0.8lagging-0.99leading
THDI	<3%	<2%
AC output topology	L+N+PE	L+N+PE
Battery		
Battery voltage range(V)	40~58	40~58
Max. charging voltage(V)	58	58
Max. Charge/discharge current(A)	95 / 110	190 / 190
Battery type	lithium /Lead-acid	lithium /Lead-acid
Communication interface	CAN/RS485/WIFI	RS485/WLAN
General Data		
DC max. efficiency	97.60%	97.20%
Euro efficiency	97%	98%
MPPT efficiency	99.90%	99.90%
Protection class	IP65	IP65
Noise emission (db)	<38	<38
Operation temperature	-25°C~+60°C	-25°C~+60°C
Cooling	Natural	Natural
Relative humidity	0 ~95%(non-condensing)	0 ~95%(non-condensing)
Altitude(m)	2000	2000
Dimensions (mm)	550X200X515	430X230X710
Weight(KG)	26	41
Inverter topology	Without transformer	Without transformer
Self-consumption(W)	<3	<2.5
Display	LCD	LCD
Certificates	CE, TUV, SAA	CE, TUV, SAA

SINGLE PHASE HYBRID INVERTER

SUN-3.6/5/8/12K



◇ Product Features:

- Colorful touch LCD, IP65 protection degree
- DC couple and AC couple to retrofit existing solar system
- Max. 16pcs parallel for on-grid and off-grid operation; Support multiple batteries parallel
- Max. charging/discharging current of 190A and 290A
- 6 time periods for battery charging/discharging
- Support storing energy from diesel generator

◇ Technical Parameters:

Model	SUN-3.6K -SG03LP1-EU	SUN-5K -SG03LP1-EU	SUN-8K -SG01LP1-EU	SUN-12K -SG01LP1-EU
Battery Input Data				
Battery Type	Lead-acid or Li-Ion			
Battery Voltage Range (V)	40~60			
Max. Charging Current (A)	90	120	190	240
Max. Discharging Current (A)	90	120	190	240
External Temperature Sensor	Yes			
Charging Curve	3 Stages / Equalization			
Charging Strategy for Li-Ion Battery	Self-adaption to BMS			
PV String Input Data				
Max. DC Input Power (W)	4680	6500	10400	15600
Rated PV Input Voltage (V)	370 (125~500)			
Start-up Voltage (V)	125			
MPPT Voltage Range (V)	150-425			
Full Load DC Voltage Range (V)	200-425			
PV Input Current (A)	26+26		26+26+26	
Max. PV ISC (A)	44+44		44+44+44	
Number of MPPT / Strings per MPPT	2/1		2/2	3/2
AC Output Data				
Rated AC Output and UPS Power (W)	3600	5000	8000	12000
Max. AC Output Power (W)	3690	5500	8800	13200
AC Output Rated Current (A)	16.4/15.7	22.7/21.7	36.4/34.8	54.5/52.2
Max. AC Current (A)	18/17.2	25/23.9	40/38.8	60/57.4
Max. Continuous AC Passthrough (A)	35		50	100
Peak Power (off grid)	2 time of rated power, 10 S			
Power Factor Adjustment Range	0.8 leading to 0.8 lagging			
Output Frequency and Voltage	50/60Hz; L/N/PE 220/230Vac (single phase)			
Grid Type	Single Phase			
DC injection current (mA)	THD<3% (Linear load<1.5%)			
Efficiency				
Max. Efficiency	97.60%			
Euro Efficiency	97.00%			
MPPT Efficiency	99.90%			
Protection				
Integrated	PV Input Lightning Protection, Anti-islanding Protection, PV String Input Reverse Polarity Protection, Insulation Resistor Detection, Residual Current Monitoring Unit, Output Over Current Protection, Output Shorted Protection, Surge protection			
Output Over Voltage Protection	DC Type II/AC Type III			
Certifications and Standards				
Grid Regulation	CEI 0-21, VDE-AR-N 4105, NRS 097, IEC 62116, IEC 61727, G99, G98, VDE 0126-1-1, RD 1699, C10-11			
Safety EMC / Standard	IEC/EN 61000-6-1/2/3/4, IEC/EN 62109-1, IEC/EN 62109-2			
General Data				
Operating Temperature Range (□)	-45~60°C, >45°C derating			
Cooling	Natural cooling			
Noise (dB)	<30 dB			
Communication with BMS	RS485; CAN			
Weight (kg)	20.5			
Size W*H*D(mm)	330 x 580 x 232	420 x 670 x 233		464 x 798.4 x 300
Protection Degree	IP65			
Installation Style	Wall-mounted			
Warranty	5 years			

THREE PHASE HYBRID INVERTER SUN-6/8/10/12K



◇ Product Features:

- Wide input voltage range.
- Compatible with lead-acid or Lithium iron phosphate battery or other battery.
- Fashion appearance, light weight, smart operation. Natural cooling, low noise.
- IP65 , wall mounted design, saving space. Touch screen LCD.
- Compatible anti counter flow function
- Battery reverse connect protection
- Intelligent energy management system for home.
- Power dispatching and demand side response management. *Distributed virtual power station management.

◇ Technical Parameters:

Model	SUN-6K -SG04LP3-EU	SUN-8K -SG04LP3-EU	SUN-10K -SG04LP3-EU	SUN-12K -SG04LP3-EU
Battery Input Data				
Battery Type	Lead-acid or Li-Ion			
Battery Voltage Range (V)	40~60			
Max. Charging Current (A)	150	190	210	240
Max. Discharging Current (A)	150	190	210	240
External Temperature Sensor	Yes			
Charging Curve	3 Stages / Equalization			
Charging Strategy for Li-Ion Battery	Self-adaption to BMS			
PV String Input Data				
Max. DC Input Power (W)	7800	10400	13000	15600
Rated PV Input Voltage (V)	550 (160~800)			
Start-up Voltage (V)	160			
MPPT Voltage Range (V)	200-650			
Full Load DC Voltage Range (V)	350-650			
PV Input Current (A)	13+13		26+13	
Max. PV ISC (A)	17+17		34+17	
Number of MPPT / Strings per MPPT	2/1		2/2+1	
AC Output Data				
Rated AC Output and UPS Power (W)	6000	8000	10000	12000
Max. AC Output Power (W)	6600	8800	11000	13200
AC Output Rated Current (A)	9.1/8.7	12.1/11.6	15.2/14.5	18.2/17.4
Max. AC Current (A)	10/9.6	13.4/12.8	16.7/15.9	20/19.1
Max. Continuous AC Passthrough (A)	45			
Peak Power (off grid)	2 time of rated power, 10 S			
Power Factor Adjustment Range	0.8 leading to 0.8 lagging			
Output Frequency and Voltage	50/60Hz; 3L/N/PE 220/380,230/400Vac			
Grid Type	Three Phase			
DC injection current (mA)	THD<3% (Linear load<1.5%)			
Efficiency				
Max. Efficiency	97.60%			
Euro Efficiency	97.00%			
MPPT Efficiency	99.90%			
Protection				
Integrated	PV Input Lightning Protection, Anti-islanding Protection, PV String Input Reverse Polarity Protection, Insulation Resistor Detection, Residual Current Monitoring Unit, Output Over Current Protection, Output Shorted Protection, Surge protection			
Output Over Voltage Protection	DC Type II/AC Type III			
Certifications and Standards				
Grid Regulation	CEI 0-21, VDE-AR-N 4105, NRS 097, IEC 62116, IEC 61727, G99, G98, VDE 0126-1-1, RD 1699, C10-11			
Safety EMC / Standard	IEC/EN 61000-6-1/2/3/4, IEC/EN 62109-1, IEC/EN 62109-2			
General Data				
Operating Temperature Range (□)	-45~60°C, >45°C derating			
Cooling	Natural cooling			
Noise (dB)	<45 dB			
Communication with BMS	RS485; CAN			
Weight (kg)	33.6			
Size (mm)	422W x 699.3H x 279D			
Protection Degree	IP65			
Installation Style	Wall-mounted			
Warranty	5 years			

THREE PHASE HYBRID INVERTER JMPS0030-150K



◇ Product Features:

Flexible

- Various working modes can be set flexibly.
- Flexible Battery Type(Li-iron,lead-acid).
- PV controller can be expanded to facilitate flexible.
- configuration of photovoltaic capacity.

Convenient

- Integrated design to support loads, batteries, power grids.
- Diesel generators and PV be connected.
- Integrated EMS function, power supply security and stability, maximum utilization of new energy

Reliable

- Prediction for intelligent battery management and discharge time.
- CAN and RS485 communication interface, modbus protocol.
- Seamless transfer between on and off grid.
- Strong load adaptability.
- Perfect protection function to protect inverters and batteries

◇ Technical Parameters:

Model	JMPS0030	JMPS0050	JMPS0100	JMPS0150
AC(on-grid)				
Max output power(KVA)	33	55	110	165
Rated power(KW)	30	50	100	150
Rated voltage(V)	400			
Rated current (A)	43	72	144	217
Voltage range(V)	320-460			
Rated frequency (Hz)	50/60			
Frequency range(Hz)	45-55/55-65			
THDi	<3%			
Power factor	0.8 lagging-0.8 leading			
AC connection	3W+N+PE			
Transformer ratio	100/400	200/400	270/400	270/400
AC(Off Grid)				
Max output power(KVA)	33	55	110	165
Rated power(KW)	30	50	100	150
Rated voltage(V)	400			
Rated current(A)	43	72	144	216
THDu	≤1% linear ; or ≤5% nonlinear			
Rated frequency(Hz)	50/60			
Overload capacity	110% long-term			
Photovoltaic input				
Max. PV input voltage(V)	1,000			
Max. PV power(KW)	60/120	60/120	120/180/240	120/180/240
MPPT voltage range(V)	250-850			
MPPT voltage range @full load (V)	450-850			
Battery				
Battery voltage range(V)	250~850	320~850	420~850	420~850
Max. charging power(KW)	60/120	60/120	120/180/240	120/180/240
General data				
Dimension W*D*H(mm)	800*800*1,900	800*800*1,900	1,200*800*2,050	1,200*800*2,050
Weight(kg)	620/650	720/750	1,120/1,150/1,180	1,250/1,280/1,310
Operation temperature	-30℃~55℃			
Relative humidity	0-95% non-condensing			
Ingress protection	IP20			
Noise emission(DB)	< 70dB			
Altitude	5,000m(> 3,000 Derating)			
Cooling	Air Cooling			
Display and communication				
Display	LCD Touch-screen			
BMS communication	RS485,CAN			
EMS communication	RS485,TCP/IP			
Certificates	TUV,CE			

POWER WALL LITHIUM BATTERY BG48100



◇ Product Features:

- EVE A Grade battery cell
- High energy destiny 3.2V 100AH battery cell
- Display Screen and button to show battery status
- Parallel connection to expand battery capacity from 5KWH to 75KWH
- Long life cycle time >6000 cycles
- Active dual-core BMS to make charge and discharge more balance
- Max Charge-Discharge Current : 100A
- Certification: CE, UN38.3, MSDS



◇ Technical Parameters:

Model	BG48100
Normal Capacity	100Ah
Total Energy	5KWH
Battery Type	LiFePO4
Normal Voltage	51.2V
Max.Charge / Discharge Current	100A
Installation	Wall Mounted
Waterproof	IP21&IP65
Communication Port	RS232/RS485/CAN
Support Parallels	Max.15pcs in Parallels
Dimension	635*400*165mm
Weight	46KG
Certificates	CE UN38.3
BMS Protocol	Communicate with kinds of brand hybrid/off grid inverters

STANDING LITHIUM BATTERY LFP48200



◇ Product Features:

- EVE A Grade battery cell
- High energy destiny 3.2V 100AH battery cell
- Display Screen and button to show battery status
- Parallel connection to expand battery capacity from 10KWH to 150KWH
- Long life cycle time >6000 cycles
- Active dual-core BMS to make charge and discharge more balance
- Max Charge-Discharge Current : 200A
- Certification: CE, FCC, UN38.3, MSDS



◇ Technical Parameters:

Model	LFP48200
Normal Capacity	200Ah
Total Energy	10KWH
Battery Type	LiFePO4
Normal Voltage	51.2V
Max.Charge / Discharge Current	200A
Installation	Standing on the floor
Waterproof	IP21&IP65
Communication Port	RS232/RS485/CAN
Support Parallels	Max.15 pcs in Parallels
Dimension	502*171*823mm
Weight	90KG
Certificates	CE UN38.3
BMS Protocol	Communicate with kinds of brand hybrid/off grid inverters

POWER WALL LITHIUM BATTERY BG48200



◇ Product Features:

- EVE A Grade battery cell
- High energy destiny 3.2V 100AH battery cell
- Display Screen and button to show battery status
- Parallel connection to expand battery capacity from 10KWH to 150KWH
- Long life cycle time >6000 cycles
- Active dual-core BMS to make charge and discharge more balance
- Max Charge-Discharge Current : 200A
- Certification: CE, FCC, UN38.3, MSDS



◇ Technical Parameters:

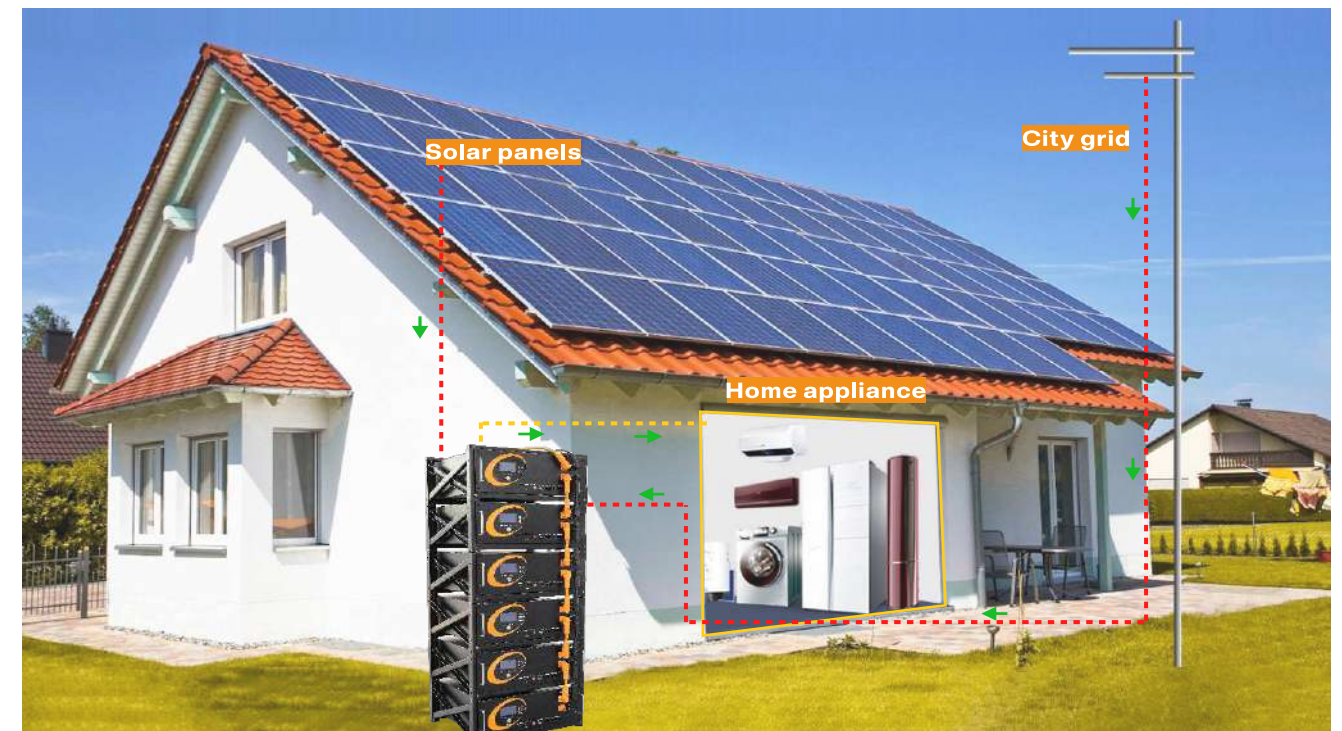
Model	BG48200
Normal Capacity	200Ah
Total Energy	10KWH
Battery Type	LiFePO4
Normal Voltage	51.2V
Max.Charge / Discharge Current	200A
Installation	Wall Mounted
Waterproof	IP21&IP65
Communication Port	RS232/RS485/CAN
Support Parallels	Max.15 pcs in Parallels
Dimension	680*450*136mm
Weight	72.5KG
Certificates	CE UN38.3
BMS Protocol	Communicate with kinds of brand hybrid/off grid inverters

4U LITHIUM BATTERY J4U48100



◇ Product Features:

- Multi-level energy management, long battery life cycle times >6000 cycles
- Quick terminal plug ,cost & time saving and installation firmly
- Modular design, easy to expand. Max.60 units in parallel, Max.capacity of 300kwh.
- Intelligent BMS, providing complete protection, supports with kinds of brand hybrid/off grid inverters
- Support multiple communication tools with RS232/RS485/CAN
- Suited to residential and commercial applications for increasing the self-consumption ratio.
- Use environmental protection materials, the whole module non-toxic, pollution-free.



◇ Technical Parameters:

Model	J4U48100
Total Energy	5KWh
Battery Type	LiFePO4
Normal Voltage	51.2V
Normal Capacity	100Ah
Max.Charge/ Discharge Current	100A
Cycle Life	> 6000cycle
Communication Interface	RS232 / RS485 / CAN
Dimension(L*W*H)	482*430*200mm
IP Grade	IP21 & IP65
Support Parallels	Max.60pcs
Installation	Built-in Cabinet / On the floor
Warranty	5 years
Pack Impedance(without BMS)	< 20mΩ
Upper charge voltage	57.6±0.1V
Lower Discharge voltage	43.2±0.1V
Operating Temperature	charge:0~55℃
	discharge :-15~55℃
Operating Humidity	5%~95% RH
Storage Temperature	-20~55℃(Long-term storage at high temperatures (>=35℃) is not recommended.)

HIGH VOLTAGE LITHIUM BATTERY

JHB60-400V / JHB90-600V



◇ Product Features:

- Superpose design to save a lot installation space
- Touch Screen to set battery
- 60KWH or 90KWH one set
- Suitable for 60KWH to 360KWH back up power bank
- Compatible 30KW to 150KW solar inverter
- Adopted 320V to 460V high voltage tech to reach high efficiency
- Active dual-core BMS to make charge and discharge more balance.
- Certification: CE, UN38.3, MSDS, IEC62619:2022

◇ Technical Parameters:

Model	JHB60-400	JHB90-600
Battery Type	LiFePO4	
Energy	61.44KWH	92.16KWH
Capacity	150AH	
Rated Voltage	409V	614V
Working Voltage Range	320~467V	480~700V
Max Charge Current	150A	200A
Max Discharge Current	150A	200A
Standard Charge Current	75A	100A
Standard Discharge Current	75A	100A
DOD	100%	
Max Parallel Quantity	1	
Designed Life-span[1]	6000 Cycles	
Operation Humidity[2]	Charge:0~60°C Discharge:-10~60°C	
Operating Temperature	5~95%	
Nominal Operation Altitude	< 3000m	
IP Rating	Ip22	
Installation Method	Stacking	
Communication	Rs485	
Certification	CE	
Net Weight	≈600KG	≈900KG
Dimension(L*W*H)	770*450*1210mm	770*450*1747mm

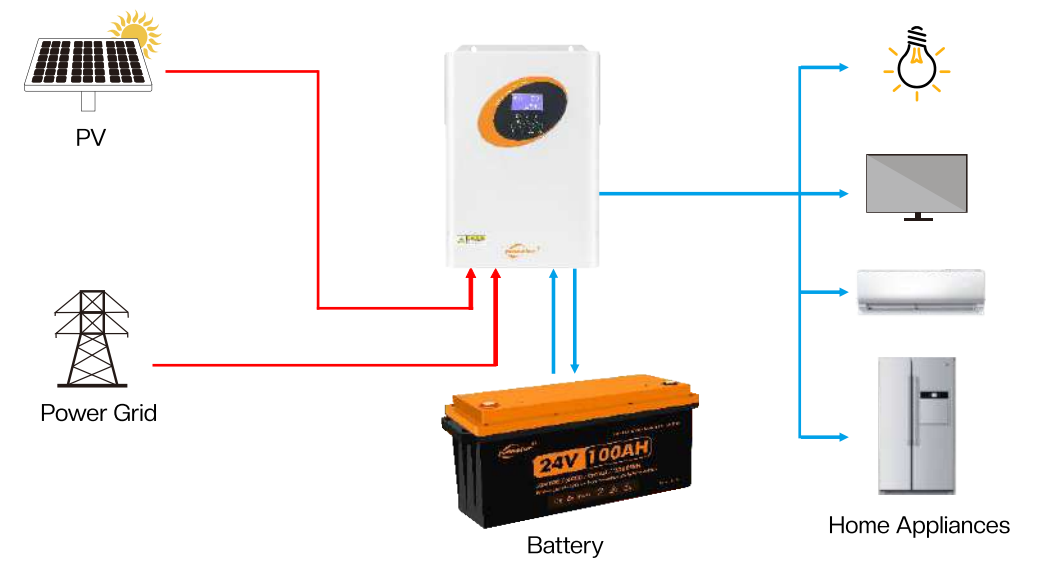
ABS CASE LITHIUM BATTERY J12100/J12200/J24100



◇ Product Features:

- Ritar Lithium Iron Phosphate LiFePO₄ Battery pack ,high power density
- Unique Triple-safety protection with high performance and long life
- With 20 times longer cyclic life than VRLA battery to save cost and energy
- With 50% lighter than VRLA battery to save logistic cost
- Suited to residential and commercial applications for increasing the self-consumption ratio.

◇ Application:



◇ Technical Parameters:

Model	J12100	J12200	J24100
Nominal voltage [V]	12.8	12.8	25.6
Nominal capacity [Ah]	100	200	100
Total energy [Kwh]	1.28	2.56	2.56
Product dimension [W*D*H]	260*168*215 mm	484*170*240 mm	484*170*240 mm
Product weight	9.5 Kg	18.5 Kg	18.5 Kg
Max. charging current [A]	100	200	100
Charge Mode	@0.2C(A) to 14.6V ,then @14.6V till charge current<0.05C(A) (CC,CV)		
Charging voltage [V]	14.6	14.6	29.2
Max. discharging current [A]	100	200	100
End of discharge voltage [V]	11.2	11.2	22.4
Protection class	IP65		
Operating humidity	0-95 %RH (No condensing)		
Operating temperature range	Charge: 0 ~ +50 °C Discharge: -20 ~ +55 °C		
Storage temperature range	-20 ~ +60 °C / -4 ~+140°F		
Communication interface	/		
BMS Functions	Cell Voltage/Current Balance, Temperature, MOSFETS		
Protection	Over voltage , Low voltage , Over current,Over Temperature, Low Temperature Short circuit		
Support Concatenation	Max 4 PCS	Max 4 PCS	Max 2 PCS
Support Parallel Connection	Max 4 PCS		

MPPT SOLAR HEATING CONTROLLER SWHC-4K



SWHC-4K

SWH-H80L



◇ Definition:

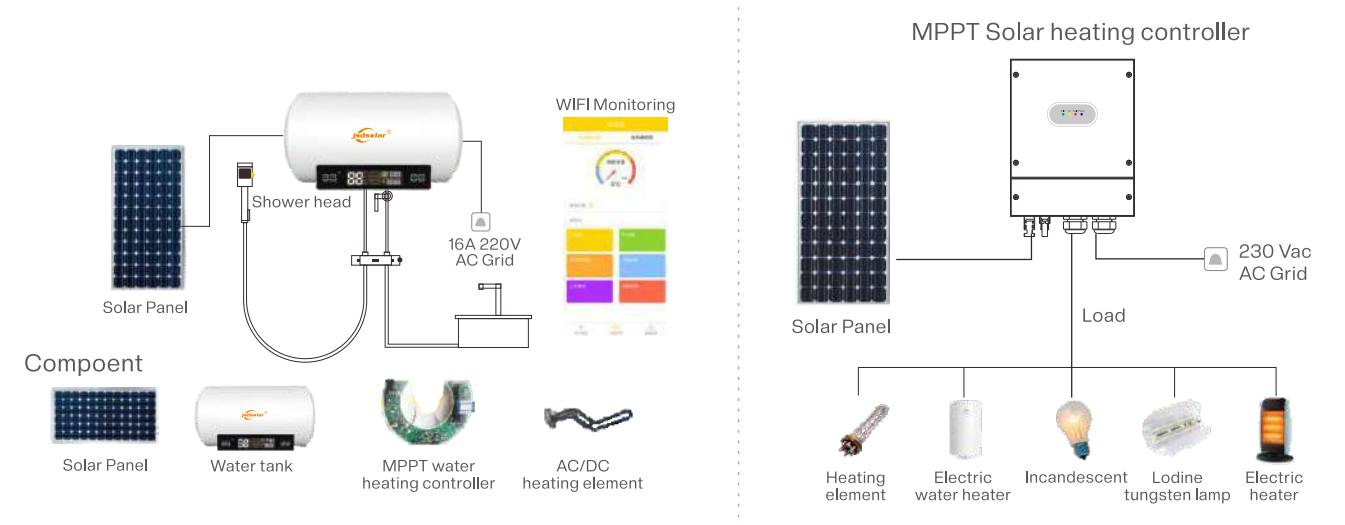
SWHC-4K:

The MPPT solar heating controller is designed for connecting to an electric water heater or resistance heating components. Solar heating first, if solar energy is insufficient, and it would switch to utility smartly. IP65 waterproof design, indoor and outdoor application.

SWH-H80L:

Photovoltaic electric water heating is powered by solar panel mainly. With the efficiency of 99% of the MPPT solar heating controller, the AC & DC dual heating element gets power from solar, and reduce the consumption from AC Grid greatly. Powered by solar in sunny days and by AC in rainy days. Switch auto or heating by Solar & AC at the same time.

◇ Technical Parameters:

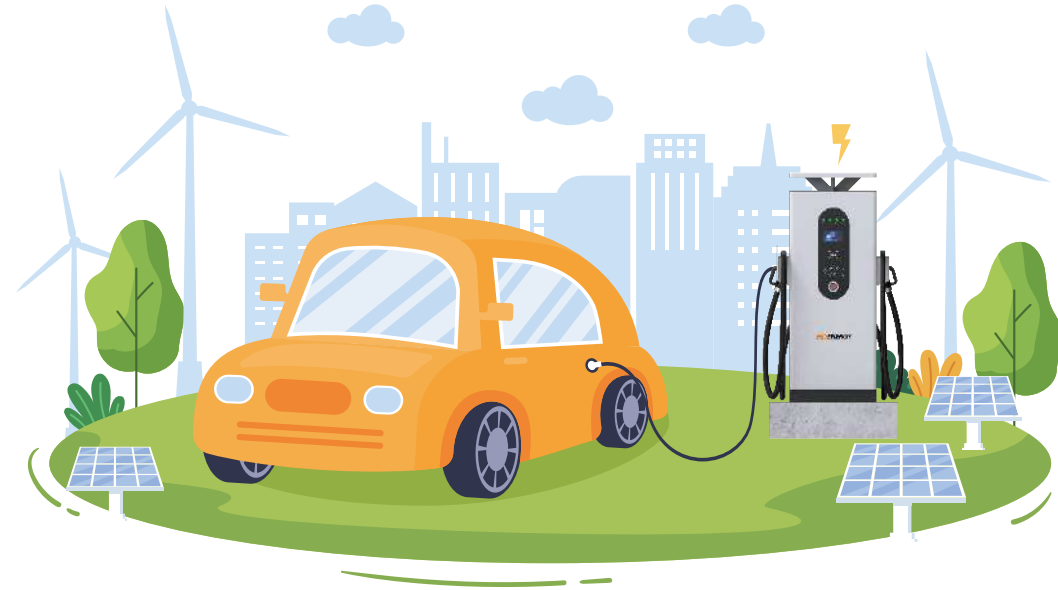


◇ Technical Parameters:

Model	SWH-80L	SWHC-4K
Volume	80L	"Customers can use their own water tank (Retrofitting Existing Electric Water Heaters)"
Photovoltaic Characteristics		
Solar Max output power	1600W	4000W (≤20A)
Recommended solar panel		800W
Annual solar power harvest		1168KWh
Heating time 40°C	4Hours	Depends on the size of the water tank
Solar input voltage	160Vdc Max /25°C	160Vdc-350Vdc
MPPT range	30Vdc-155Vdc	120Vdc-340Vdc
AC Characteristics		
AC heater power	2000W	4000W
AC voltage		220V
AC working voltage range		180Vdc-260Vdc
Physical		
Monitoring	WiFi setting and monitoring (optional)	No
Protection	Over temperature protection, leakage protection, IP21	Over temperature protection, leakage protection, IP65
Inner tank material	Enamel	Not Applicable (Customers can use their own water tank)
Machine dimension	440x835	255x201x95mm
Package dimension	555x495x950mm	363x272x170mm
Net weight	26KG	3KG
Gross weight	28KG	3.6KG
Certificate		CE, IEC62109

EV CHARGING STATION VTEDC1

-60/120/160/180/240/320KW



EV Charger

JSD Energy is a professional EV Charger overall solution provider, of which the business covers investment, construction and operation services of EV Charger.



All-in-one DC Series -VTEDC1

(60/120/160/180/240/320kW)

Product Introduction

VTEDC1 is a new generation of integrated DC constant power fast EV Charger with system built-in 30/40kW constant power charging module and a highest output voltage of 1000V, suitable for all kinds of vehicle charging requirements. The module adopts isolated duct design with high reliability in all kinds of harsh environment scenarios. The system is compatible with 60~320kW power allocation, single gun, double gun, power distribution, and multi-pile ring network scheme, and it can be used in all kinds of public and special charging stations.



Features

- Professional heat dissipation design**
 - Scientific ventilation scheme is adopted to ensure the ventilation volume of the module, control the internal temperature, and improve the efficiency and stability of the module.
- Wide voltage range**
 - Support 150-1000V DC charging output, 300V-1000V constant power charging output, suitable for all kinds of passenger cars and large vehicles.
- Stable and reliable**
 - Complete configuration of positive and negative bus DC contactor and safety, protection switch, input lightning protection device, leakage switch, grounding and insulation monitoring and safety protection devices, with multiple protection functions and logic in software and hardware.
- Active protection**
 - The BMS is deeply interactive in the monitoring of the charging process to ensure safety and upgrade the "blind charging" state of the traditional electric pile.
- Double waterproof**
 - Power distribution and control adopts double chamber design while inlet and outlet airflow adopts labyrinth design with double waterproof and dustproof capability.
- Compatible with latest and previous national standards**
 - Excellent compatibility and adaptation ability, compatible with latest and previous national standards; BMS auxiliary power supply, 12V /24V optional.
- No need to debug**
 - Fuel consumption charging of the vehicle matches 99.6% of the vehicle.

Application scenario

- Small and medium-sized buses and passenger cars, public parking lots, residential parking lots, office building parking lots, shopping malls and other small and medium-sized electric vehicle charging places.

SOLAR POWER SYSTEMS

POWER WALL SOLAR HOME SYSTEM



◆ Product Features:

- 3KW to 36KW solar home system option
- Off grid main power connected type
- System Type: Off-grid
- 3KW parallel inverter
- Power wall 5KWH LiFePO4 battery
- Mono 182 10BB half-cell solar panel
- Pitched/flat roof and ground mounting bracket option
- Power distribution box with air breaker
- Accessories

EU HYBRID SOLAR HOME SYSTEM



◇ Product Features:

- 10KW to 60KW solar home system option
- System Type: Hybrid
- 10KW Three phase hybrid inverter
- 5KWH or 10KWH LiFePO4 battery
- Mono 182 10BB half-cell solar panel
- Pitched roof or flat roof mounted bracket
- Power distribution box with air breaker
- Accessories

EU HYBRID SOLAR HOME SYSTEM



◇ Product Features:

- 6KW to 24KW solar home system option
- System Type: Hybrid
- 6KW 48V/220V single phase hybrid inverter
- 5KWH or 10KWH LiFePO4 battery
- Mono 182 10BB half-cell solar panel
- Pitched/flat roof and ground mounting bracket option
- Power distribution box with air breaker
- Accessories

COMMERCIAL GRADE SOLAR SYSTEM



◇ Product Features:

- 30KW to 150KW solar system option
- System Type: hybrid
- 30KW,50KW,100KW, 150KW 400V 3phase hybrid inverter
- 60KWH or 90KWH Parallel LiFePO4 battery
- 550W Mono 182 10BB half-cell solar panel
- Pitched/flat roof and ground mounting bracket option
- PV Combiner
- Power distribution box with air breaker
- Accessories



CASE STUDIES



BUSINESS NETWORK

High-quality service provider for **100,000** households and businesses around the world

Panasonic

CATL
宁德时代

NEXTERA ENERGY

EIKTO

赣锋锂业
Ganfeng Lithium

JA SOLAR
晶奥太阳能

EVE 亿纬锂能

enel
Green Power

BYD

LONGI 隆基

IBEBDBOLA

LG Chem

Trinasolar
天合光能

SK

Contact

中国电建
POWERCHINA

BASF
The Chemical Company

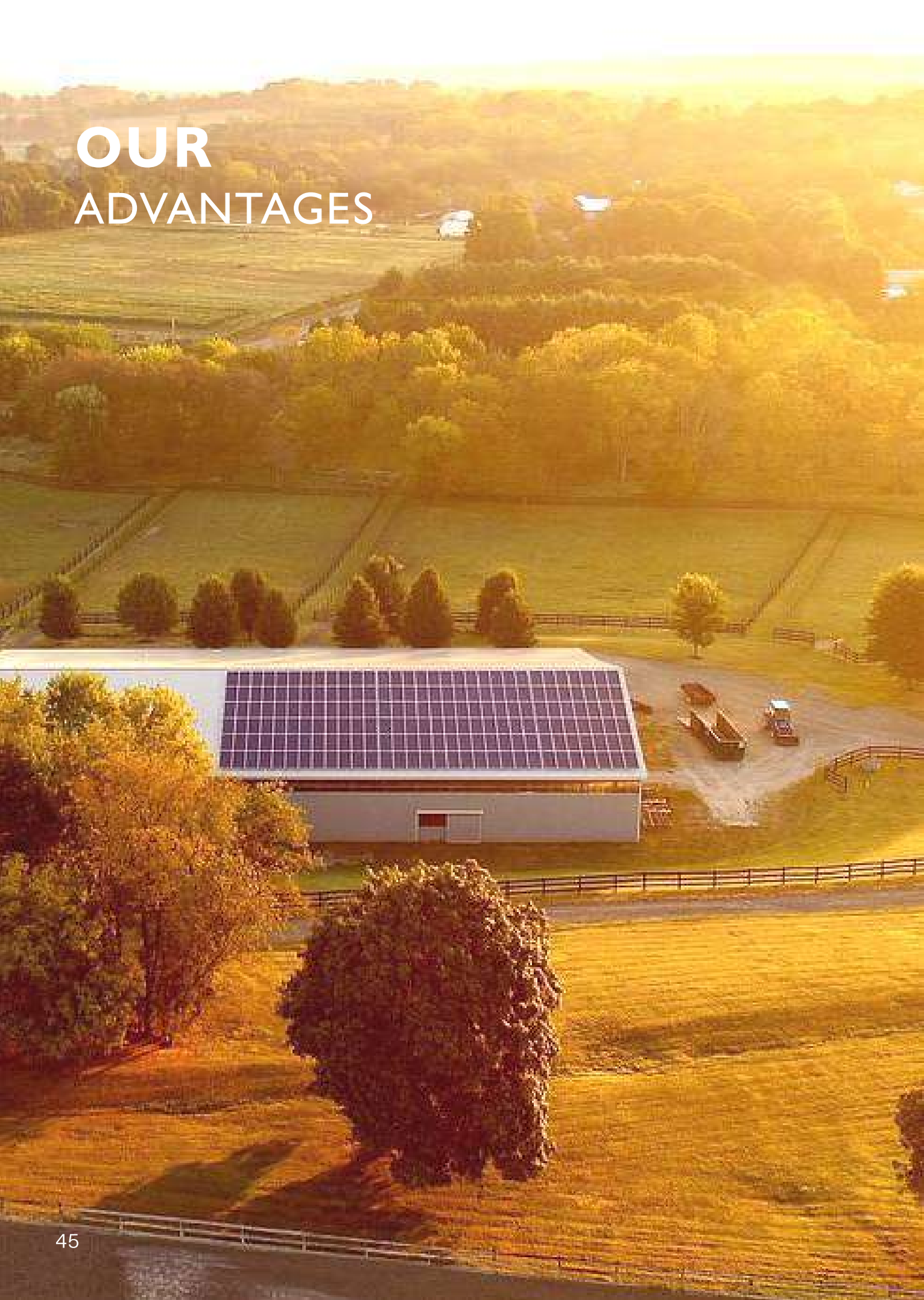
HUAWEI

Unilumin 洲明

risen
solar technology

Deye

OUR ADVANTAGES



R&D STRENGTH



Attach importance to talents, investment and innovation

JSD constantly introduces world technical experience and gathers high-tech talents at home and abroad to ensure the stable development of the company's industry and maintain long-term competitive advantage. Invest more than 15% of sales every year as R & D expenses!

We are customer-oriented, continuous innovation and rapid response. Continuously developing new products and systems according to customer requirements. By establishing strategic Cong alliance in terms of technology and market, we can obtain new energy storage technologies and enter new markets

FIVE YEAR PLAN

Annual sales 200 million USD

Growing at a rate of 30% per year

Customers 100000

Market share expands year by year

Product sales coverage 5 continents

Products are sold all over the world



Improve the core competitiveness of enterprises



Become a technology pioneer in the solar system industry



Become an internationally competitive company



Improve customer satisfaction

SINCERE COOPERATION

Your preferred partner for solar energy storage



SERVICE PROCESS

- ▶ Discuss and confirm requirements
- ▶ Design and provide solution
- ▶ Signing the contract
- ▶ Production
- ▶ Delivery
- ▶ After-sales support



AFTER-SALES SERVICE



Professional after-sales service team

We have a strong and professional after-sales service team to provide you with technical support and service



Quick response

The service hotline is non-stop throughout the year, realizing 365X24 full-time service



FAQ instruction manual

Documents, videos, professional troubleshooting of common problems and rapid resolution



Regular return visit service

Service Center personnel regularly visit customers, and conduct remote inspection of product status and equipment verification



Customer satisfaction Center

The customer can rate the service personnel. If you are not satisfied, you can call the complaint hotline

